

TF35 Trophy –GP Scarlino SAILING INSTRUCTIONS

September 23rd to 26th, 2021

Organizing authority:

The GP Scarlino will be organized by Yacht Club Isole di Toscana in conjunction with the TF35 Class Association.

1 RULES

1.1 The event will be governed by

- (a) the 'rules' as defined in the RRS 2021-2024 High Speed Edition V1.0 (HSR),
- (b) the Equipment Rules of Sailing
- (c) the TF35 Class Rules, Tour Rules and Event Calls
- (d) national authority prescriptions will not apply
- (f) the TF35 Trophy SI Vs 2021_01 (TF35 SI),
- (g) Replace SI 25 by: "From Tuesday Sept 21, 12h00, boats shall not be hauled out except if a damage is reported with and according to the terms of prior written permission of the Class Office. [DP]"

2 NOTICES AND COMMUNICATIONS

- 2.1 Notices to competitors will be posted on the official notice board (ONB) located in the Team Zone of the TF35 Trophy website: <https://tf35.org/team-zone>
- 2.2 The VHF call sign for the Race Committee (RC) will be "TF35 RC". VHF channel 69 will be used to communicate with Competitors and Support Boats.

3 CHANGES TO THE SAILING INSTRUCTIONS

See the TF35 SI

4 SIGNALS MADE ASHORE

- 4.1 Signals made ashore will be displayed on the flagpole located nearby the Control Tower.
- 4.2 When flag AP is displayed ashore, "1 minute" is replaced with "not less than 30 minutes" in the race signals AP.

5 SCHEDULE OF RACES AND BRIEFINGS

Thursday, 23 Sept

10:30	Fleet Race Briefing
12:00	1st warning signal for Practice Fleet Race
14:00	1st warning signal for Fleet Race

Friday, 24 Sept

10:30	Fleet Race Briefing
12:00	1st warning signal

Saturday, 25 Sept

10:30	Fleet Race Briefing
12:00	1st warning signal for Fleet Race

Sunday, 26 Sept

10:30	Fleet Race Briefing
12:00	1st warning signal for Fleet Race
15:30	Last initial warning signal
After racing	Prize giving ceremony

6 CLASS FLAG

The Class Flag will be the TF35 Class Flag

7 RACING AREA

See appendix A

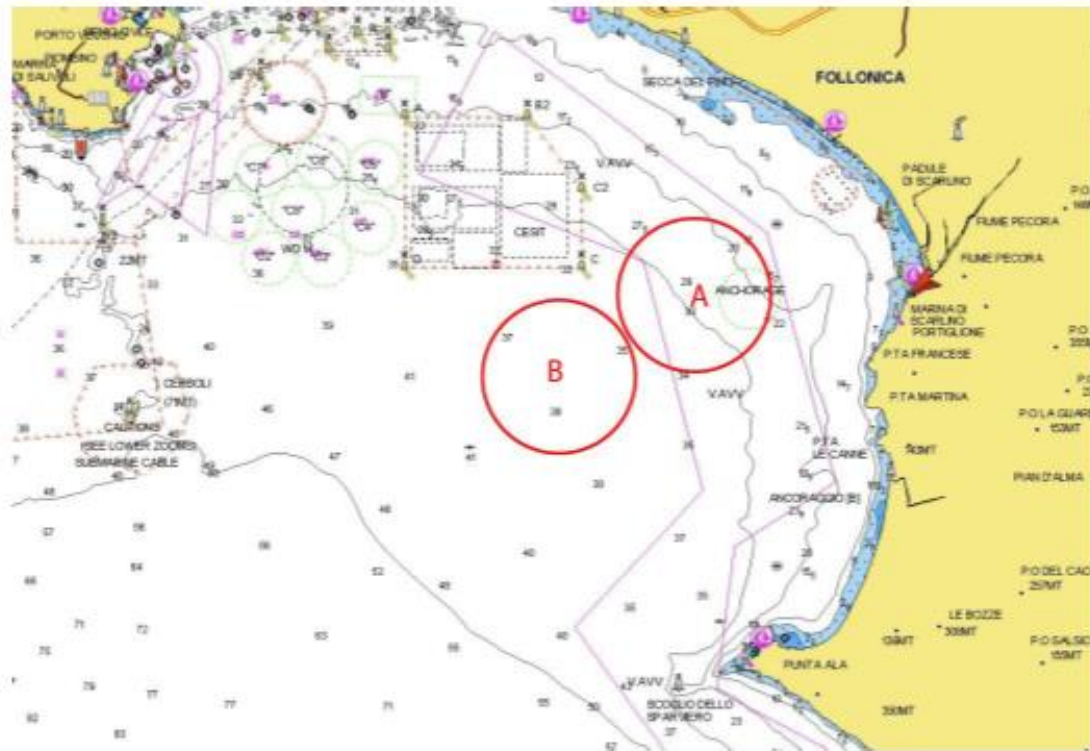
8 DESCRIPTIONS OF MARKS

Marks GW and GL will be yellow cylinders.

New marks, as described in TF35 SI14.1, will be white cylinders.

Starting and finishing marks will be red cylinders.

Appendix A: Racing Area



Racing area A and B can be used.

Race area will be announced every morning during the skipper briefing.

Sailing inside the area defined by the yellow cardinal marks is not allowed.