

TF35 Trophy –GP Scarlino

SAILING INSTRUCTIONS

October 6th to 9th, 2022

Organizing authority:

The GP Scarlino will be organized by Yacht Club Isole di Toscana in conjunction with the TF35 Class Association.

1 RULES

- 1.1 The event will be governed by
- (a) the 'rules' as defined in the last applicable version of the RRS High Speed Rules 2021-2024,
 - (b) the Equipment Rules of Sailing will apply,
 - (c) the TF35 Class Rules, Tour Rules and Event Calls
 - (d) national authority prescriptions will not apply
 - (f) the TF35 SI Vs 2022_01,

2 NOTICES AND COMMUNICATIONS

- 2.1 Notices to competitors will be posted on the official notice board (ONB) located: in the Team Zone of the TF35 Trophy website: <https://tf35.org/team-zone>
- 2.2 The VHF call sign for the Race Committee (RC) will be VHF channel 69. It will be used to communicate with Competitors and Support Boats.

3 CHANGES TO THE SAILING INSTRUCTIONS

See the Annual Sailing Instructions

4 SIGNALS MADE ASHORE

- 4.1 Signals made ashore will be displayed on the flagpole located on the east side of the Club House.
- 4.2 When flag AP is displayed ashore, "1 minute" is replaced with "not less than 30 minutes" in the race signal AP.

5 SCHEDULE OF RACES AND BRIEFINGS

Thursday, 6 Oct

10:30	Fleet Race Briefing @ Regatta Paddock
12:00	1st warning signal for Practice Fleet Race
14:00	1st warning signal for maximum 2 Fleet Races
18:30	Welcome cocktail

Friday, 7 Oct

10:30	Fleet Race Briefing @ Regatta Paddock
12:00	1st warning signal
17:00	After sail

Saturday, 8 Oct

10:30	Fleet Race Briefing @ Regatta Paddock
12:00	1st warning signal for Fleet Race
19:00	Crew party

Sunday, 9 Oct

10:30	Fleet Race Briefing @ Regatta Paddock
12:00	1st warning signal for Fleet Race
15:30	Last warning signal
After racing	Prize giving ceremony

6 CLASS FLAG

The Class Flag will be the TF35 Class Flag

7 RACING AREA

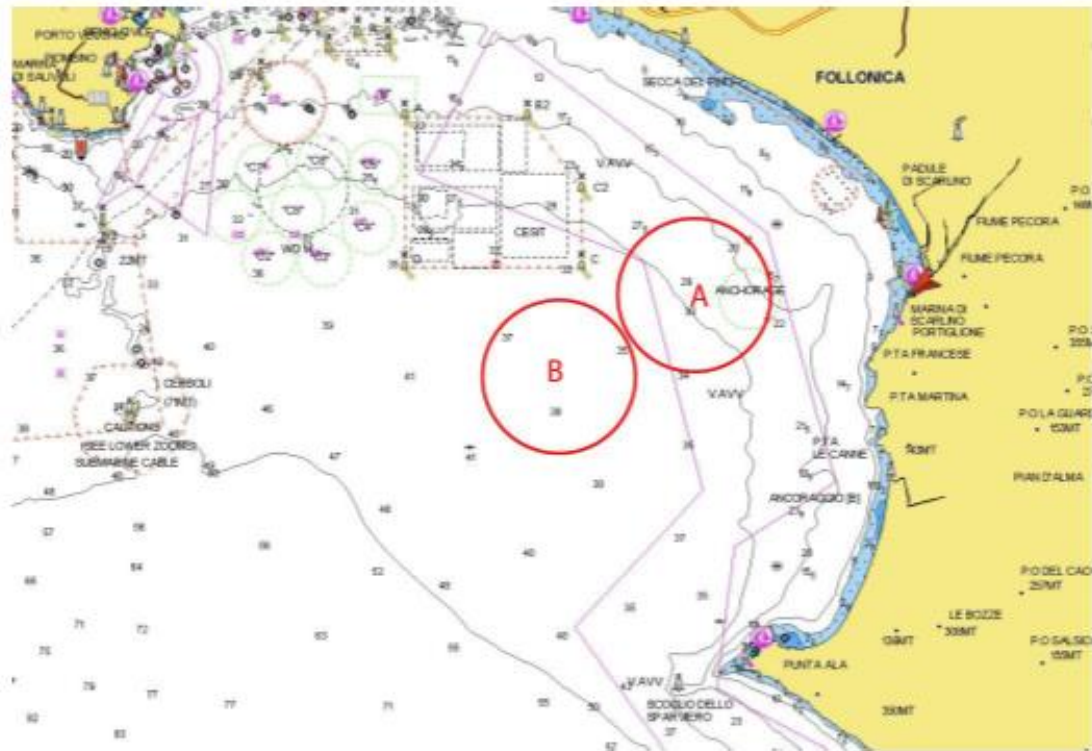
See appendix A posted on the ONB

8 DESCRIPTIONS OF MARKS

The GW marks and GL port mark will be yellow. The START/FINISH/GL starboard mark will be red with Omega logo.

New mark, as provided in instruction F14.1, will be orange.

Appendix A: Racing Area



Racing area A and B can be used.

Race area will be announced every morning during the skipper briefing.

Sailing inside the area defined by the yellow cardinal marks is not allowed.